



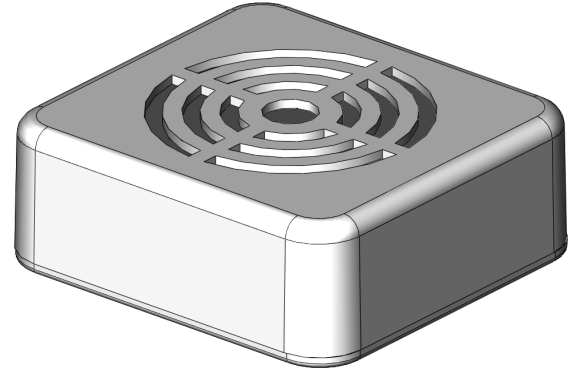
Z-Stuff for Trains

assembled and tested in the USA

420 Mills St. Hinsdale, IL 60521 585-377-0925

www.z-stuff.net

smartSignal



DZ-1020B Crossing Bell Sound Module

The DZ-1020B Crossing Bell Sound Module will work with the DZ-1020HO-s and DZ-1020N-s Crossing Signals from Z-Stuff. The authentic crossing bell sound is generated when the YELLOW input wire of the DZ-1020B is connected to common (0V.) by the output of a DZ-1020HO/N, an isolated rail contact, push button, or other signal. The DZ-1020B only requires power (AC or +DC) connected to the RED wire and common (AC or -DC) to the BLACK wire.

